



QOM-DC+CAP

The QOM-DC+CAP is a DC power supply for LED lighting applications. It includes a robust rectifier, a large filter capacitor, and five tap selections to accommodate for long cable runs. The large filter capacitor removes any voltage ripple and guarantees no LED flicker.

The QOM-DC+CAP follows Class 2 power limits, with 60W circuits for 12V outputs and 96W circuits for 24V outputs. The QOM-DC+CAP is capable of two 60W 12V circuits or 96W 24V circuits.

HOUSING

- 18 gauge Welded Steel Enclosure: 9.00"W x 14.5"H x 4.75"D
- Door: 9.05"W x 14.5"H
- Knockouts: 21
- Built-in support bracket incorporated to secure housing for surface mounting

FEATURES

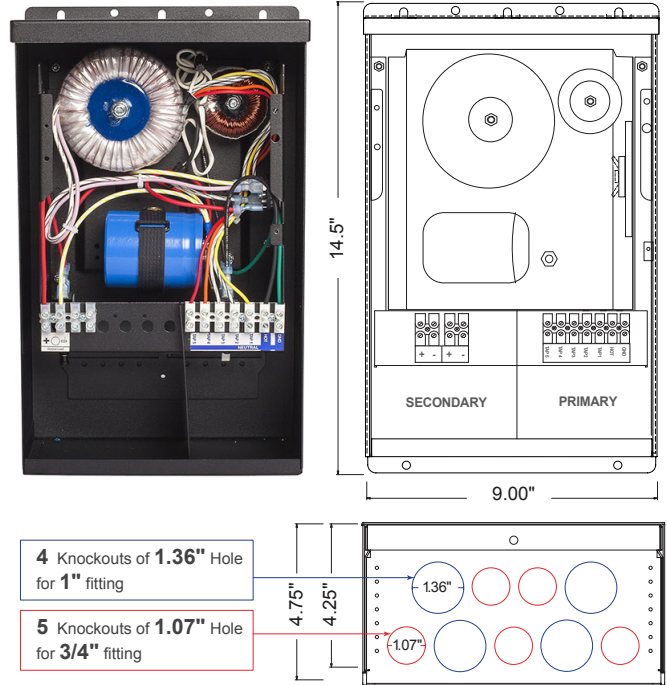
- Suitable for dry, damp and wet locations
- Suitable for Indoor or Outdoor Use
- Suitable for Use with Submersible Luminaire
- Primary Voltage - 120V or 277V
- Loads may be connected to one (1) of the primary taps to the full watt rating of the PSC.
- Rated for 100% operation, no de-rating required.
- 1-2 magnetic circuit breaker
- Five (5) primary taps provide:
 - 12V** : 12, 13, 14, 15, 16
 - 24V** : 24, 26, 28, 30, 32
- The advantage is that loads at varying distances from the PSC can be tapped to recover voltage drop and produce between 85%-100% light output.
- 10 year warranty
- CSA #239924

Low Voltage Lighting Systems

- : CSA Class 3425-15 and Class 3425-95
- : CSA Standard C22.2 No. 250.0-08 - Luminaires
- : UL 2108 - Low Voltage Lighting Systems
- : CSA Standard C22.2 No. 250.13-14 - Light Emitting Diode (LED) Equipment for Lighting Applications
- : UL 8750 - Light Emitting Diode (LED) Equipment for Use in Lighting Products

Landscape Lighting Systems

- : CSA Class 3426-04 and Class 3426-94
- : CSA Standard C22.2 No. 250.7-07 - Extra-Low-Voltage Landscape Lighting Systems
- : UL 1838 - Low Voltage Landscape Lighting Systems
- : CSA Standard C22.2 No. 250.13-14 - Light Emitting Diode (LED) Equipment for Lighting Applications
- : UL 8750 - Light Emitting Diode (LED) Equipment for Use in Lighting Products



* For information on this Power Supply please consult the Q-Tran Indoor catalog or visit the Q-Tran website.

ORDERING GUIDE							
Model	1 Size	2 Prim. V	3 Sec	4 No	5 Brk Amp	6 Choke	7 Opts
QOM	-	-	/	-	x	+	CK-S +
1 Size	Max Load (Watts)	Secondary Voltage (VDC)		Max Prim. Amps @ 120V	Max Prim. Amps @ 277V		
60DC+CAP	60W	12		0.9 A	0.4 A		
120DC+CAP	120W	12		1.4 A	.60 A		
60DC+CAP	60W	24		0.9 A	0.4 A		
100DC+CAP	100W	24		1.1 A	0.5 A		
200DC+CAP	200W	24		2.4 A	1.0 A		
2 Primary Voltage							
	120(60Hz)	220 (50/60Hz)*	230 (50/60Hz)*	240 (50/60Hz)*	277(60Hz)		
3 Secondary Voltage					7 Options		
	12VDC	24VDC					
4 Number of Breakers					BK Black Powder Coat Finish - Standard SS* 316 Marine Grade Stainless Steel CP* Cord & Plug		
1-2							
5 Secondary Breaker Amperage							
	AMPS	Max 12V Load	Max 24V Load				
	2.5	30W	60W				
	4	48W	96W				
	5	60W	120W				
6 Choke							
CK-S: 60W-200W Standard							
Ordering Example							
QOM-60DC+CAP - 120/12 - 1x5 + CK-S							

*Not Standard, Call Factory For options

2017.V01

PROJECT NAME	DATE	COMPANY	TYPE	NOTE