



# QT10

12V/24V, 120/230/277

: Specification Sheet Low Voltage Magnetic Transformer

## MODEL NUMBERS:

QT10-120/12-TP-RC  
TOR10-120/12-TP

QT10-120/24-TP-RC  
TOR10-120/24-TP

QT10-277/12-TP-RC  
TOR10-277/12-TP

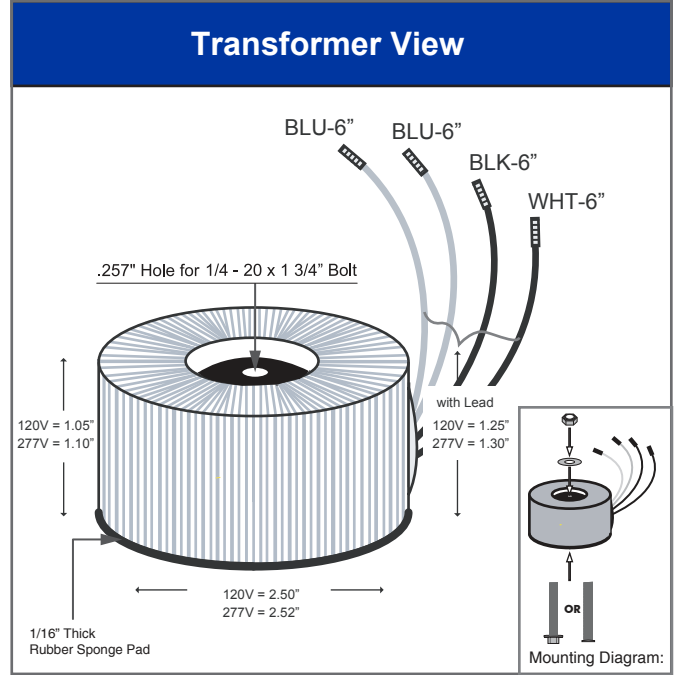
QT10-277/24-TP-RC  
TOR10-277/24-TP

\*Custom Voltages are available upon request

## FEATURES:

1. Power Rating: 10 Watts
2. Primary Voltage: 120V (60Hz) or 277V (60Hz)  
\* 230V (50Hz) available
3. Secondary Voltage: 12V or 24V
4. Class B insulation system
5. Quiet operation at any light level
6. Fully dimmable with Magnetic Low Voltage dimmer

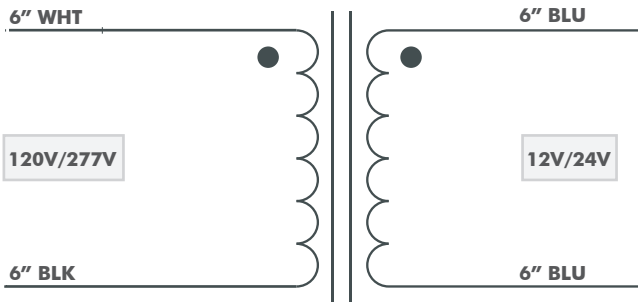
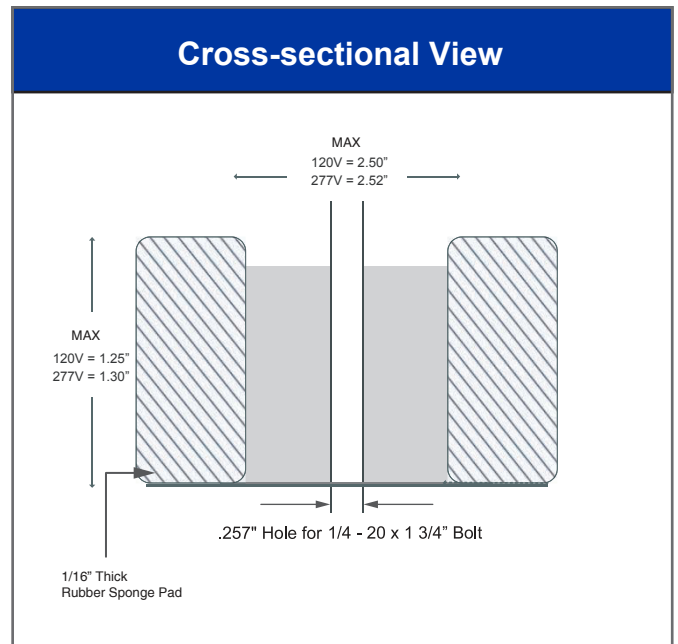
\* This Series was formally the LQT Series



### Suggested Mounting Hardware

<b>Hex Bolt</b> 1/4"-20 x 1 3/4"  	<b>Pem Stud</b> 1/4"-20 x 1 3/4"  	<b>Low Profile Hex Nylock Nut</b> 1/4"-20 x .2" thick  	<b>Zink Plated Steel Washer</b> .07" thick  3/4" OD 3/8" ID
---	---	--	---

**Hardware by OEM**



\* Dimensions have tolerance

\* Q-Tran, Inc. reserves the right to change product specifications at any time without incurring obligations.

