



QT10

12V/24V, 120/230/277

: Specification Sheet Low Voltage Magnetic Transformer

MODEL NUMBERS:

QT10-120/12-TP-RC
TOR10-120/12-TP

QT10-120/24-TP-RC
TOR10-120/24-TP

QT10-277/12-TP-RC
TOR10-277/12-TP

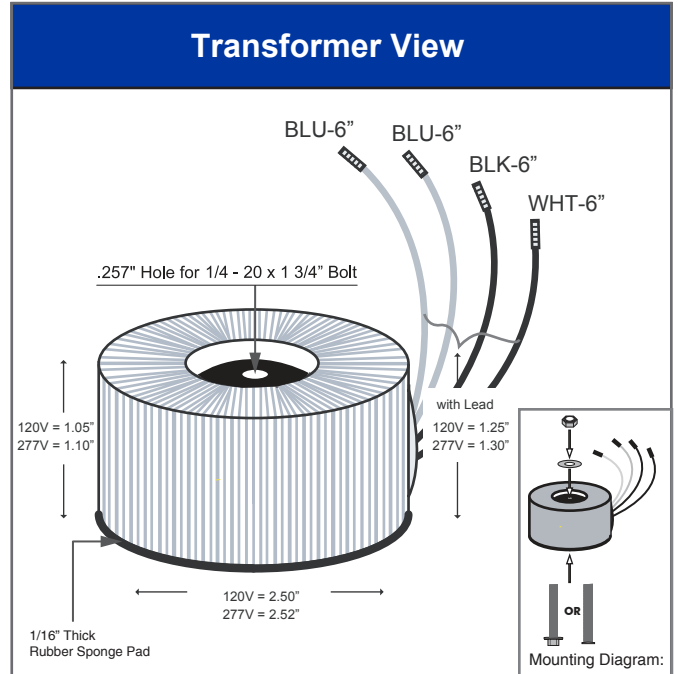
QT10-277/24-TP-RC
TOR10-277/24-TP

*Custom Voltages are available upon request

FEATURES:

1. Power Rating: 10 Watts
2. Primary Voltage: 120V (60Hz) or 277V (60Hz)
* 230V (50Hz) available
3. Secondary Voltage: 12V or 24V
4. Class B insulation system
5. Quiet operation at any light level
6. Fully dimmable with Magnetic Low Voltage dimmer

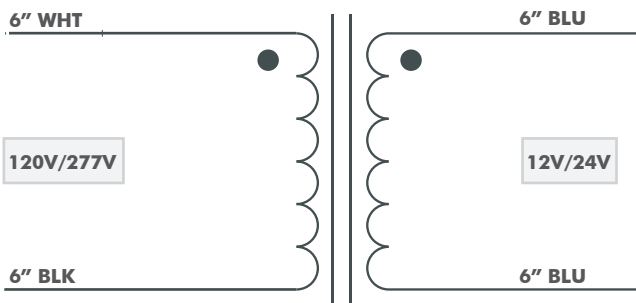
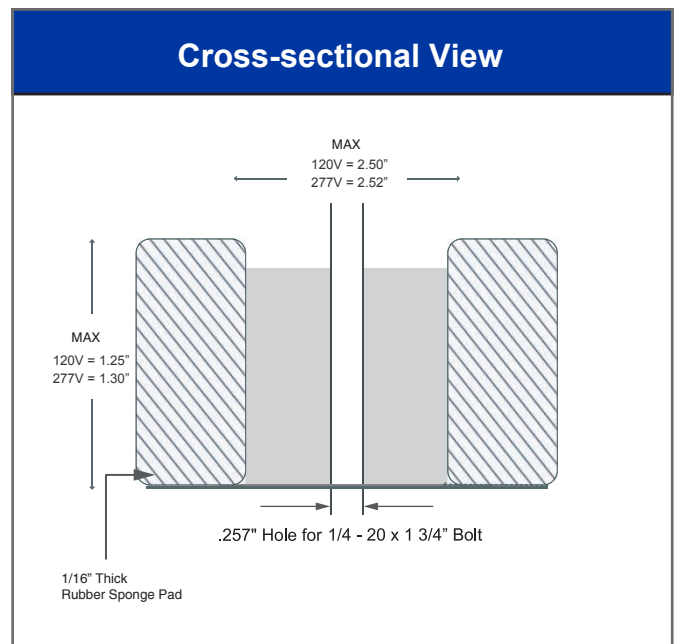
* This Series was formally the LQT Series



Suggested Mounting Hardware

Hex Bolt 1/4"-20 x 1 3/4" 	Pem Stud 1/4"-20 x 1 3/4" 	Low Profile Hex Nylock Nut 1/4"-20 x .2" thick 	Zink Plated Steel Washer .07" thick 3/4" OD 3/8" ID
---	---	--	---

Hardware by OEM



* Dimensions have tolerance

* Q-Tran, Inc. reserves the right to change product specifications at any time without incurring obligations.

