



# QT20

12V/24V, 120/230/277

: Specification Sheet Low Voltage Magnetic Transformer

## MODEL NUMBERS:

QT20-120/12-TP-RC  
TOR20-120/12-TP

QT20-120/24-TP-RC  
TOR20-120/24-TP

QT20-277/12-TP-RC  
TOR20-277/12-TP

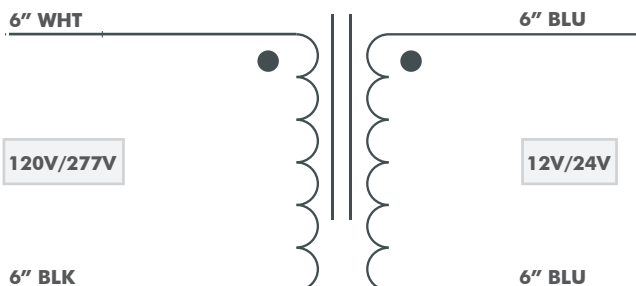
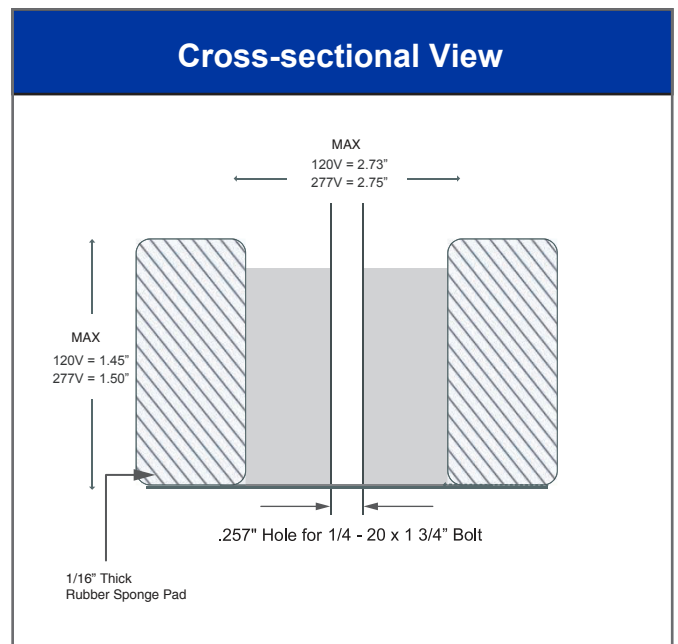
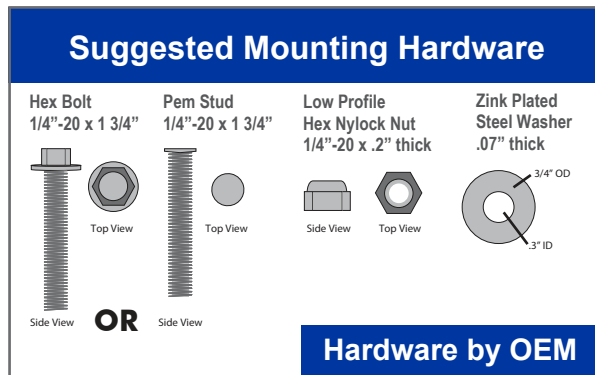
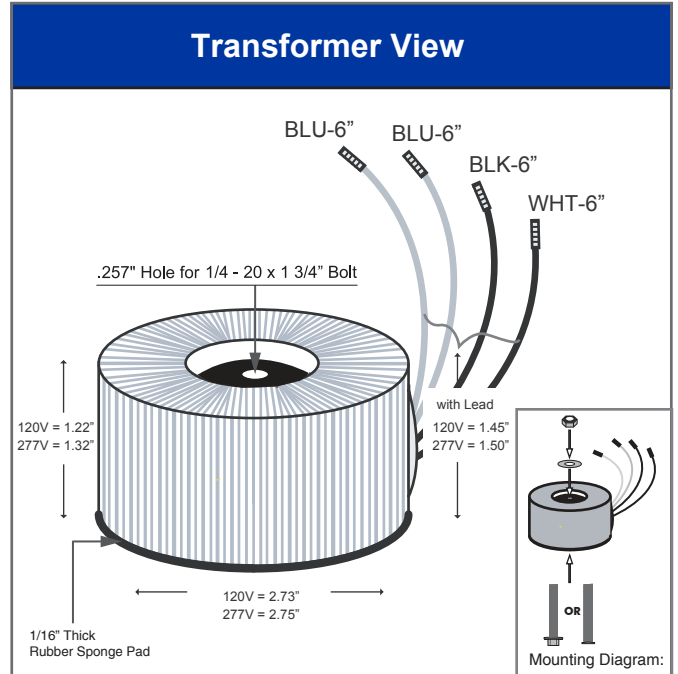
QT20-277/24-TP-RC  
TOR20-277/24-TP

\*Custom Voltages are available upon request

## FEATURES:

1. Power Rating: 20 Watts
2. Primary Voltage: 120V (60Hz) or 277V (60Hz)  
\* 230V (50Hz) available
3. Secondary Voltage: 12V or 24V
4. Class B insulation system
5. Quiet operation at any light level
6. Fully dimmable with Magnetic Low Voltage dimmer

\* This Series was formally the LQT Series



\* Dimensions have tolerance

\* Q-Tran, Inc. reserves the right to change product specifications at any time without incurring obligations.

