

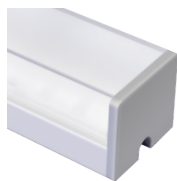
RESOURCE GUIDE

EXTRUSIONS - SURFACE - TRE3



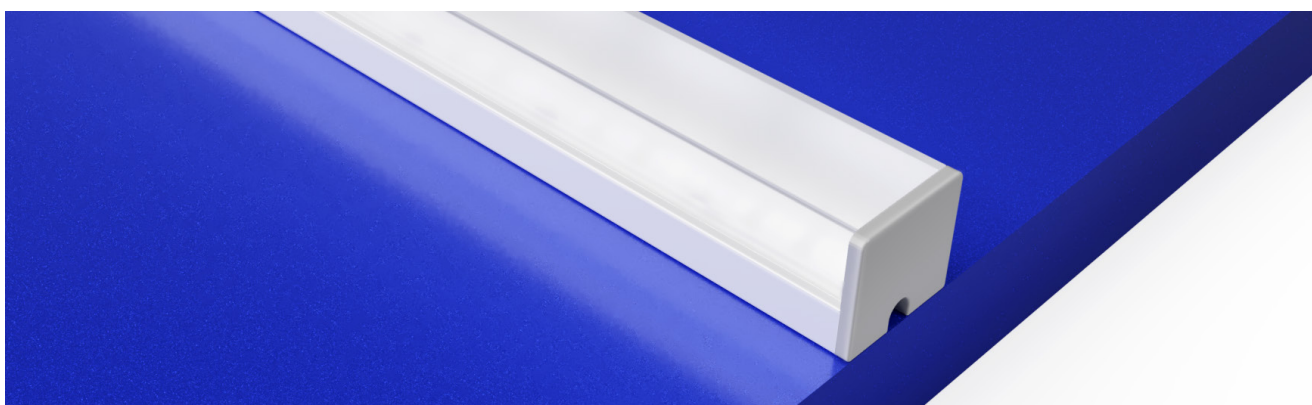
FINISH

SATIN



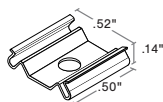
SATIN ANODIZED
MATTE FINISH
GREY ENDCAPS

MOUNTING TYPE - SURFACE



MOUNTING - HARDWARE

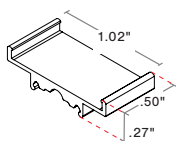
Hidden Stainless Steel
(TRE3-HSS)



2 clips provided for 4' or less;
4 clips provided for greater than 4'

- Stainless Steel
- Indoor/Outdoor
- #4 x 5/8" Flat Head SS (1 per clip included)

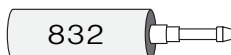
Plastic T-Bar
(TRE3-TBC)



Standard 1" (15/16) grid Clips
2 clips provided per first 12",
1 clip provided per additional foot

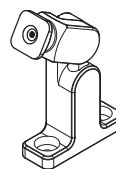
- Plastic

832
(see Accessory cutsheet)



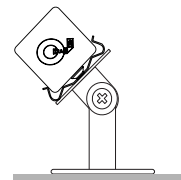
- Strong adhesive
- Non submersible, for dry and wet locations

Q-ANGLE
(see Accessory cutsheet)



- Adjustable mounting bracket
- Indoor/Outdoor

PIVOT BRACKET
(see Accessory cutsheet)



- Adjustable mounting bracket
- Indoor

LENS

DF Diffused



RESOURCE GUIDE

EXTRUSIONS - SURFACE - TRE3



CONNECTORS

LIGHT ORIENTATION

STATIC WHITE AND STATIC COLOR ONLY

BW



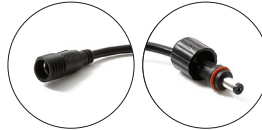
BARE WIRE 24"

BRL

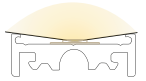


MALE INPUT FEMALE OUTPUT
DRY BARREL 6"

BRL



MALE INPUT FEMALE OUTPUT
WET BARREL 6"



SYMMETRICAL

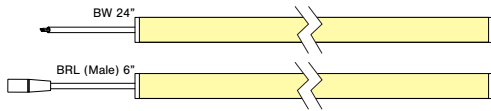
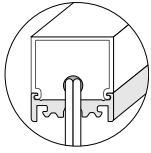
RESOURCE GUIDE

EXTRUSIONS - SURFACE - TRE3

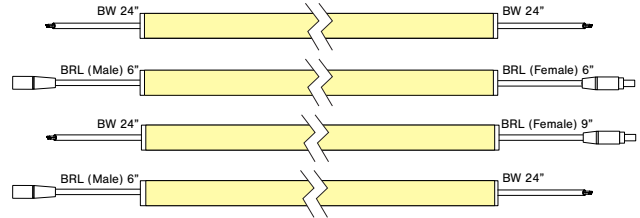


TYPE To order a bare extrusion without a strip installed in Q-Tran factory, choose **NI** (Not Installed) for your Type option

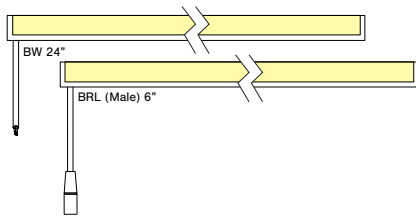
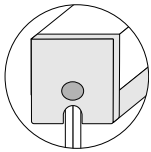
S1 - Input only



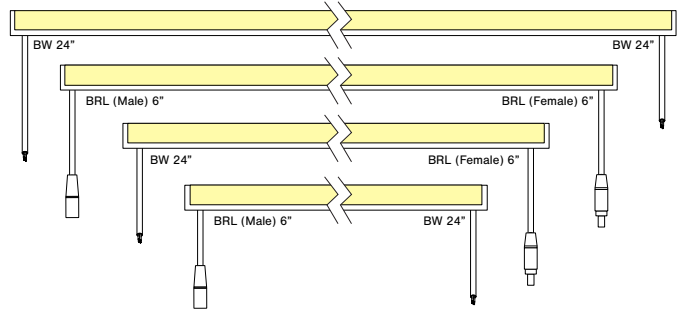
P1 - Input/Output



S2 - Input only



P2 - Input/Output



RESOURCE GUIDE - COMPATIBILITY

STRIP & EXTRUSION



STRIP AND EXTRUSION COMPATIBILITY

EXTRUSIONS	STATIC WHITE				DYNAMIC WHITE				STATIC COLOR				RGB				RGBW			
	DRY	DMP	WET	ENC	DRY	DMP	WET	ENC	DRY	DMP	WET	ENC	DRY	DMP	WET	ENC	DRY	DMP	WET	ENC
ARKA	✓	✓	✓	✗	✓	✓	✓	✗	✓	✓	✓	✗	✓	✓	✓	✗	✓	✓	✗	✗
TELA	✓	✓	✓	✗	✓	✓	✓	✗	✓	✓	✓	✗	✓	✓	✓	✗	✓	✓	✗	✗
VEVE	✓	✓	✓	✗	✓	✓	✓	✗	✓	✓	✓	✗	✓	✓	✓	✗	✓	✓	✗	✗
FLUR	✓	✓	✓	✓	✓	✓	✗	✓	✓	✓	✓	✓	✓	✓	✗	✓	✗	✗	✗	✗
LATO	✓	✓	✓	✓	✓	✓	✗	✓	✓	✓	✓	✓	✓	✓	✗	✓	✗	✗	✗	✗
TORQ	✓	✓	✓	✓	✓	✓	✗	✓	✓	✓	✓	✓	✓	✓	✗	✓	✗	✗	✗	✗
VEGA	✓	✓	✗	✗	✓	✓	✗	✗	✓	✓	✗	✗	✓	✓	✗	✗	✗	✗	✗	✗
ROND	✓	✓	✗	✗	✓	✓	✗	✗	✓	✓	✗	✗	✓	✓	✗	✗	✗	✗	✗	✗
SLIM	✓	✓	✓	✗	✓	✓	✗	✗	✓	✓	✓	✗	✓	✓	✗	✗	✗	✗	✗	✗
WIDE	✓	✓	✓	✗	✓	✓	✓	✗	✓	✓	✓	✗	✓	✓	✓	✗	✓	✓	✓	✗
TRE3	✓	✓	✓	✗	✓	✓	✓	✗	✓	✓	✓	✗	✓	✓	✓	✗	✓	✓	✗	✗

KEY

- ✓ = Encapsulated but not with 6.0 & 7.5 strip
- ✓ = Wet rated but with no lens